

EN-27: A Pump Mini application

- This engineering note is a simple first step exercise to illustrate how easy it is to create custom graphics for Vykon HVAC by using one of the mini applications

Add a new folder called EN27 under HVAC

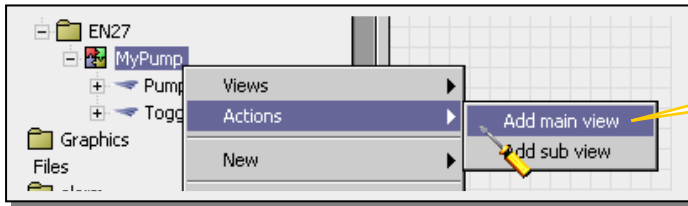
Drag a CustomApplication container onto the wire sheet of EN27 and call it MyPump

View the wire sheet of MyPump

Drag a Toggle and Pump on/off mini application onto the wire sheet of Fancoil and link them together.

Tip:
By using mini applications you can **quickly** create custom operation and graphics to match the Vykon HVAC graphics.

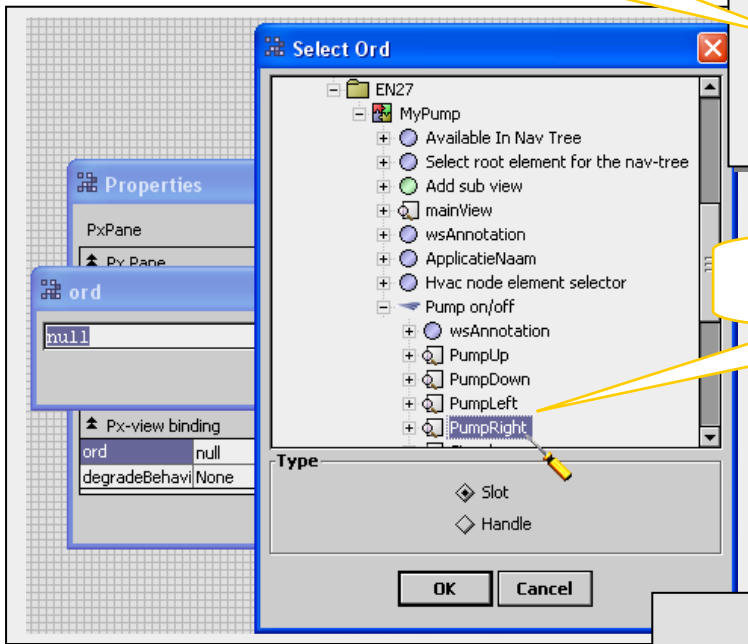
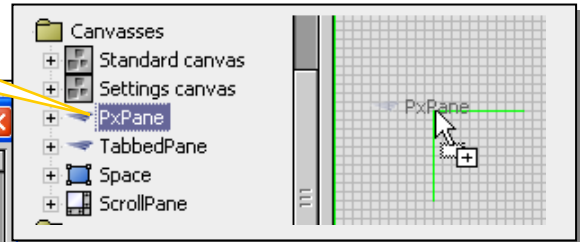
Map the pump to an output via the Signals view



Add a **main view** to MyPump by the **Add main view** action

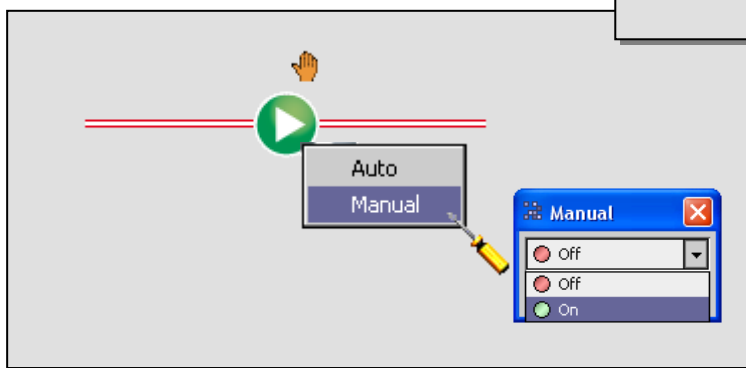
Tip:
If you use the Custom application containers then you can take advantage of automation features such as this **Add main view** action to simplify the creation of your custom graphics

Add a **PxPane** Widget Canvas to the main view canvas



Select one of the **Pump** views as the **Ord** of the **Px-view binding**

Add some **small red horizontal piping**



Tip:
The pump mini application is fully equipped with manual/auto override control; runtime history and feedback from the I/O for hand/off/auto override switch status and alarm condition. All these facilities are automatically enabled when you use the mini application. This is one example and there are many more mini applications for you to choose

