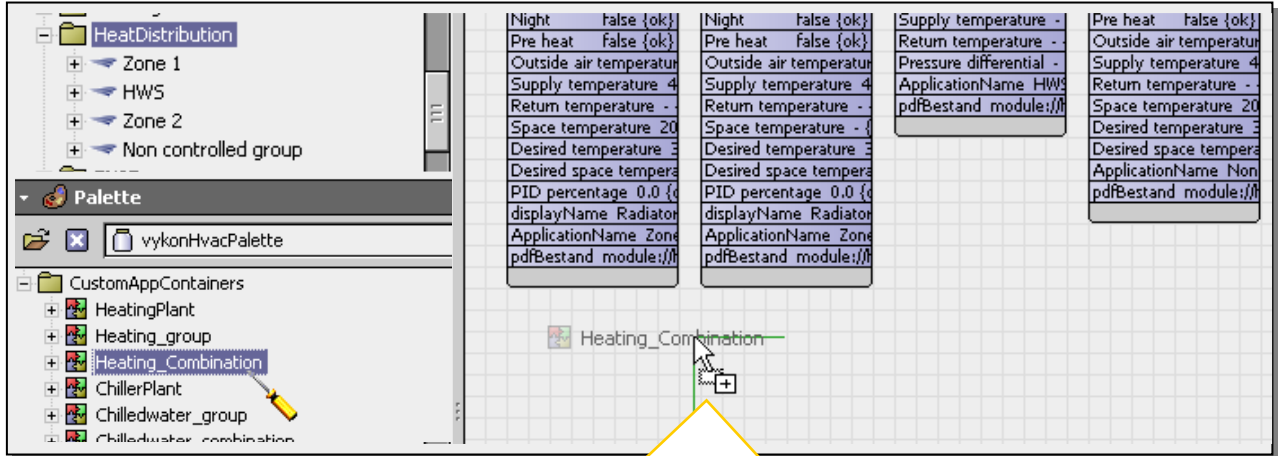
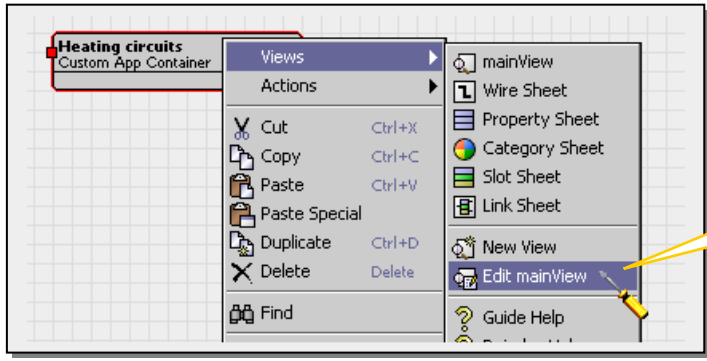


EN-28: A combination graphic

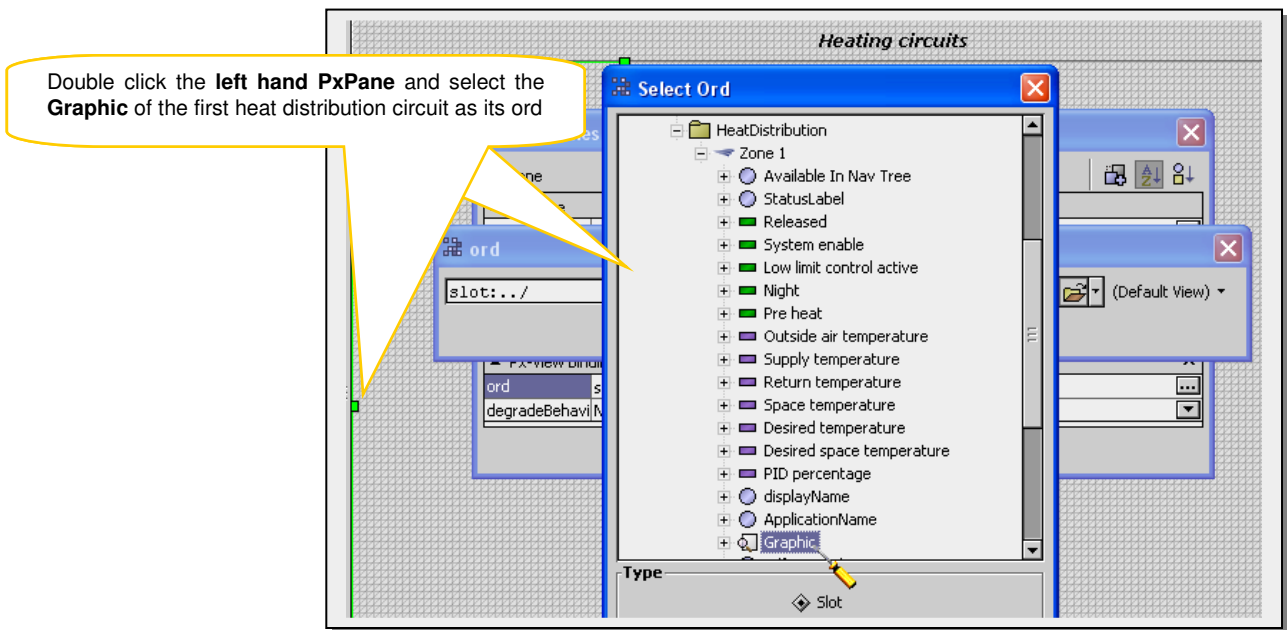
- This engineering note is an exercise to create graphics for Vykon HVAC by using one of the custom application containers



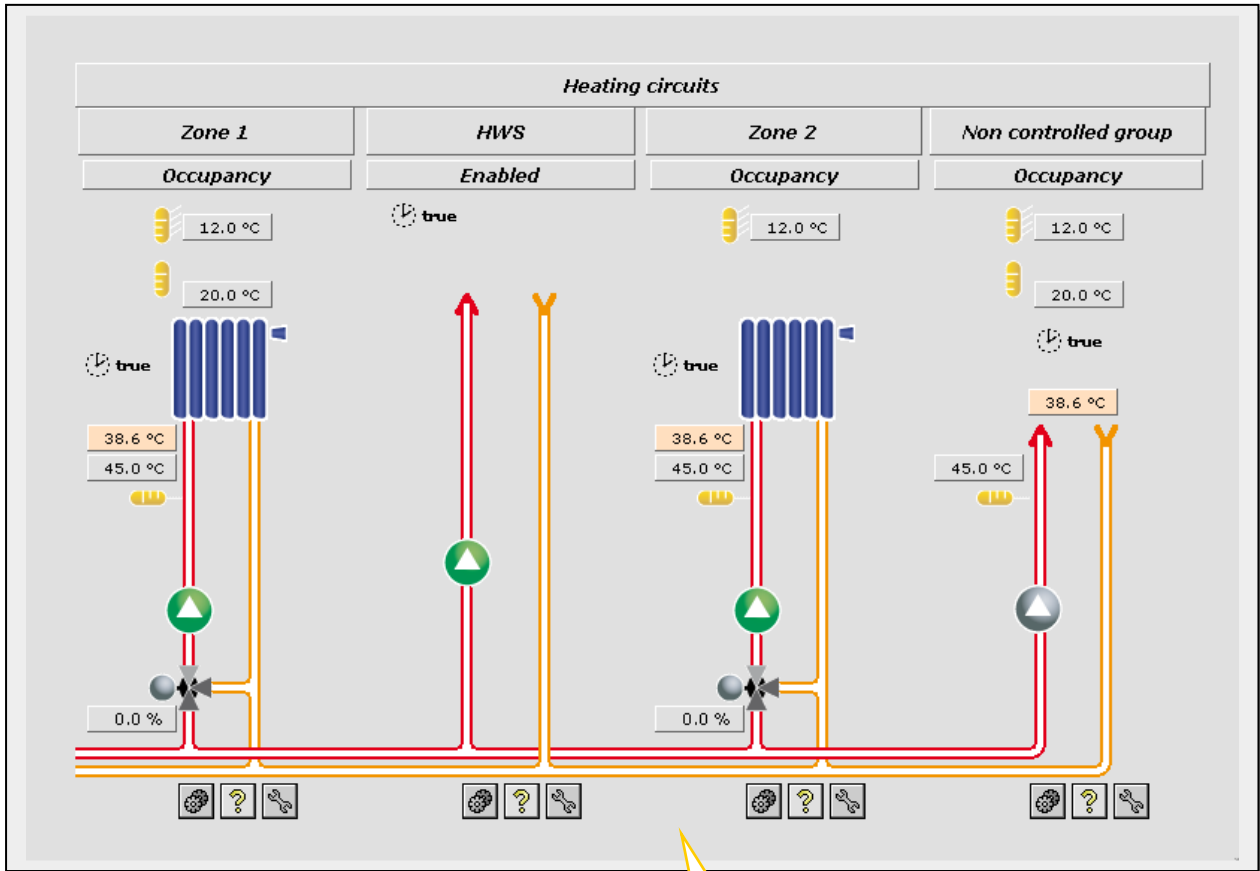
Drag a **HeatingCombinationCustomApplication** container onto the wire sheet of a HeatDistribution folder and call it **Heating circuits**



Edit the **mainView** of the Heating circuits container



Double click the **left hand PxPane** and select the **Graphic** of the first heat distribution circuit as its ord



Repeat the process for the remaining circuits...

