

- The source station (the station that is exporting an object link data) maintains the only reference to alarms for the linked object. (in accordance with the object defaults). The destination station does not duplicate the alarms
- A station level UrgentAlarm is automatically raised if the Niagara Network Driver...Ping monitor identifies a communications failure

Configuration

To illustrate how it operates, consider the example in Figure 1 and let us configure the main 'occupancy' time schedule in station 1 as a time command link for the Zone 1 radiators application in station 2:

Station 2

Commands IO Miscellaneous

Time schedule
Time extension
Frost limit
Summer condition
Summer stop
External heat demand

Local time schedules

Search other stations

Evening classes
Office occupancy
Occupier
<<< Search other station(s) >>>

Select the desired remote object for this point

HeadinglyLodge | Occupancy

OK Cancel

Station 1

Sunday
Monday
Tuesday
Wednesday
Thursday
Friday
Saturday

0 1 2 3 4 5 6 7 8 9 10 11 12 13 14 15 16 17 18 19 20 21 22 23 0 Hour

0 1 2 3 4 5 6 7 8 9 10 11 12 13 14 15 16 17 18 19 20 21 22 23 0 Hour

0 1 2 3 4 5 6 7 8 9 10 11 12 13 14 15 16 17 18 19 20 21 22 23 0 Hour

0 1 2 3 4 5 6 7 8 9 10 11 12 13 14 15 16 17 18 19 20 21 22 23 0 Hour

0 1 2 3 4 5 6 7 8 9 10 11 12 13 14 15 16 17 18 19 20 21 22 23 0 Hour

0 1 2 3 4 5 6 7 8 9 10 11 12 13 14 15 16 17 18 19 20 21 22 23 0 Hour

0 1 2 3 4 5 6 7 8 9 10 11 12 13 14 15 16 17 18 19 20 21 22 23 0 Hour

And done !

Note:
The hyperlink automatically links to the source schedule in station 1 and all override and editing functions are maintained remotely

Zone 1 Radiators

Occupancy

5,3 °C
18,4 °C
54,2 °C
38,3 °C

No objects found

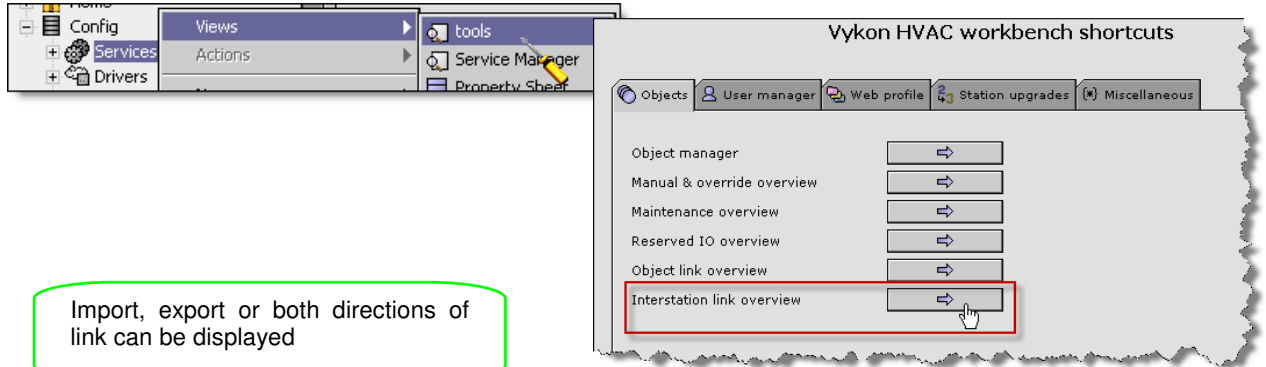
There are no (more) interstation objects for this type available

OK

Note:
If there are no appropriate objects available in any of the remote stations then you will be **warned**

Diagnostics

The Tools view on the Services folder in workbench provides access to the 'Interstation link overview' which gives you an overview of which objects in the station are being used by other stations (Export) and which remote objects are being used by this station (Import) :

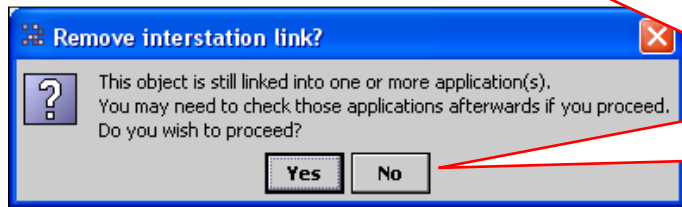


Import, export or both directions of link can be displayed

Interstation link overview

Select link direction: Import & export Select

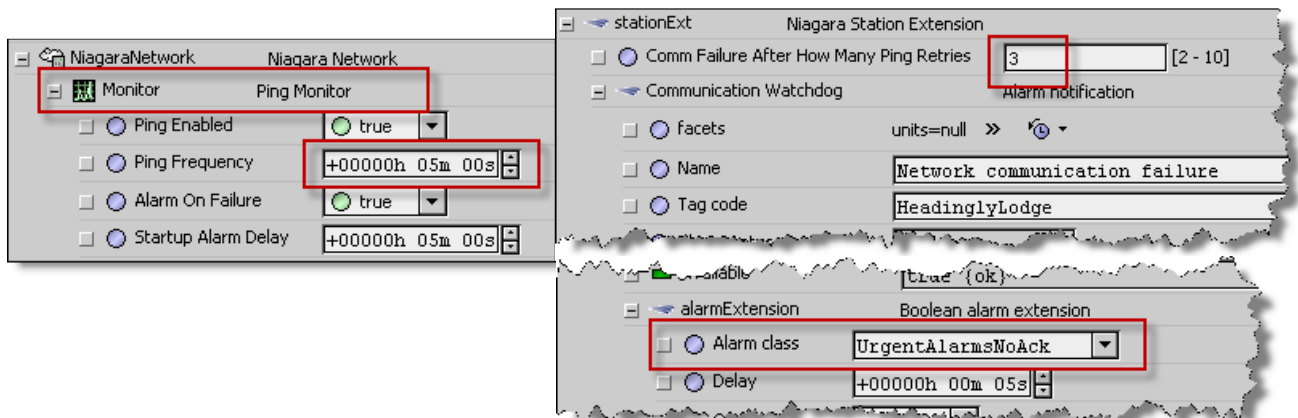
Type	Application	Name	Tag code	Interstation link
Time extension feedback	Occupancy	Occupancy_		Import
Summer condition	Lodge north wall outside temp	Lodge north wall outside temp_		Import
Outside air temperature sensor	Lodge north wall outside temp	Lodge north wall outside temp_	L_NW_003	Import
Frost limit	Lodge north wall outside temp	Lodge north wall outside temp_		Import
Heat demand setpoint	Radiator group	Radiator group_		Import
Boiler common flow temperature sensor	Occupancy	Boiler common flow temperature	FH_BR_CFT	Export
Schedule	Occupancy	Occupancy_		Import
Summer stop	Lodge north wall outside temp	Lodge north wall outside temp_		Import



Warning:
Double-click a link and you can remove it but you will be warned. Note that if you remove an export link then all remote stations that used it will be affected

Linked object monitor

The object linking system in each station contains a communications watchdog monitor which will raise (by default) an Urgent Alarm if the Niagara Network ping monitor tries (and fails) 3 times (15 minutes) which will indicate that the communications link between stations has failed:



The Niagara Network driver

You must configure the stations in the Niagara Network Driver to enable interstation object linking::

Name	Full Name	Enabled	Expiration	Network
admin		true	Never	false
M2M	M2M	true	Never	true

Note:
You will need to first add a User with super-user rights for the stations to connect to each other

Name	Exts	Address	Host Model	Version	Status
FlemingHouse		ip:192.168.2.123	NPM6	3.4.46	{unac

Discover the remote stations and add them to the Niagara Network driver database

Name	Exts	Address	Host Model	Version	Status
HeadinglyLodge		ip:192.168.2.1	Workstation	3.4.46	{unac

Do it at all stations

