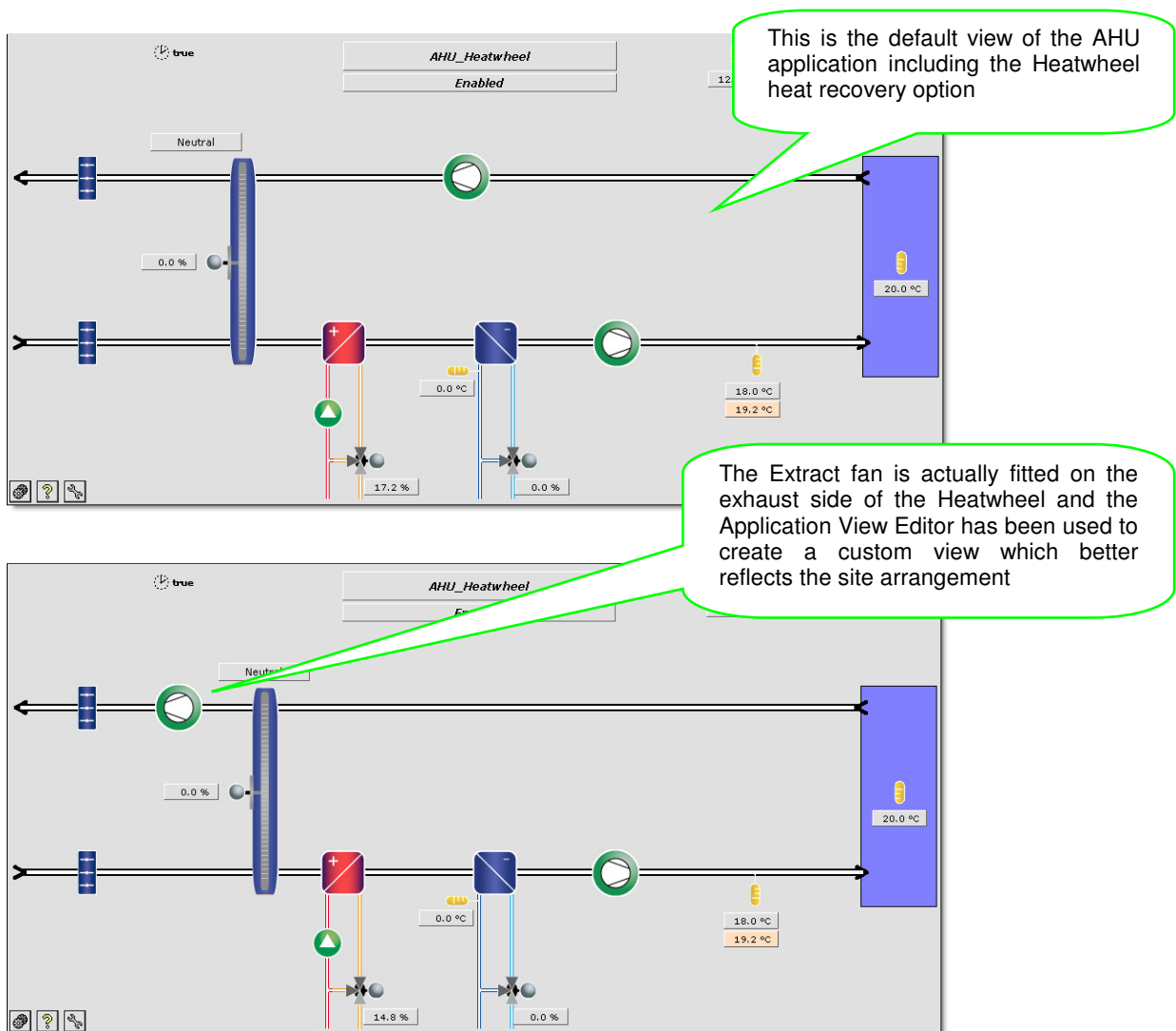
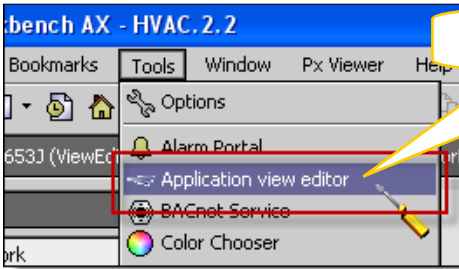


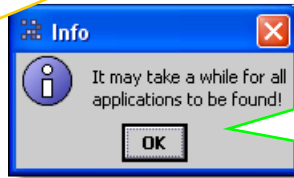
## EN-39: The Application View Editor

- At the heart of Vykon HVAC is an extensive library of standard HVAC applications that include pre-built graphic views which illustrate the application components and their current state. These 'default' graphic views are fixed and cannot be modified except by using the available strategy and configuration options within the application. However, the customisation of standard application strategies to accommodate unique or special site requirements is available within Vykon HVAC and other engineering notes describe how, by using mini-applications and custom logic it can be easily done.
- The Application View Editor is a workbench tool that enables the easy customisation of application graphics so that the views can better illustrate site arrangements and include any custom application strategies. This engineering note describes the operation of the Application View Editor which was re-introduced at Release 2.2. Two examples are described which illustrate the Application View Editor.
- This example** simply shows how the 'default' view can be recomposed as a 'custom' view to better represent the site arrangement:



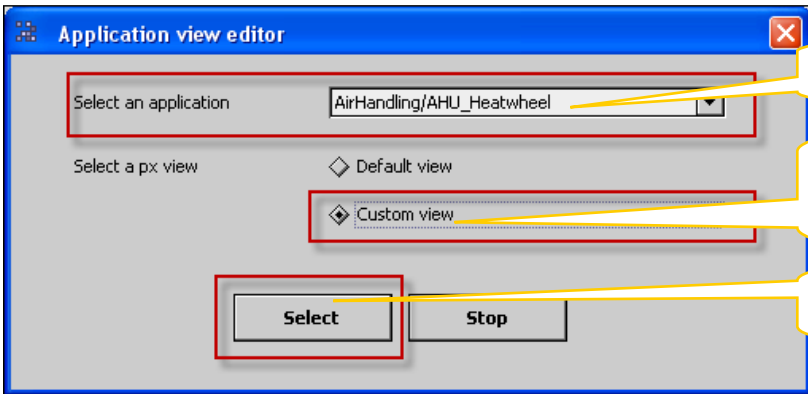


Select the Application View Editor



**Note:**

It can take up to 20 seconds or so to do this depending upon if it is working on Laptop or remote JACE® applications – be patient!

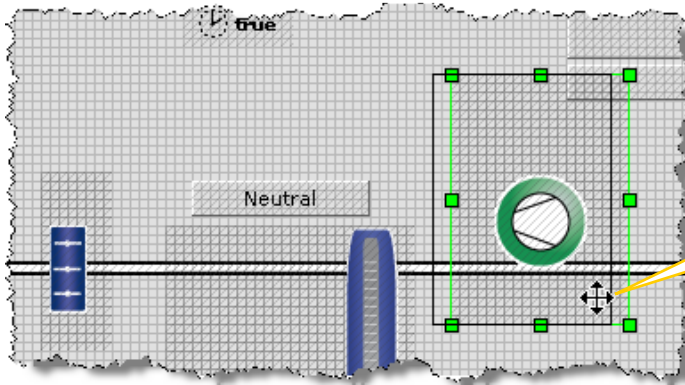
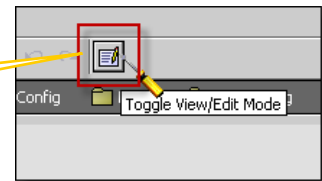


Select the Application you wish to edit

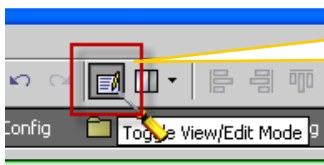
Select which view you wish to use (in this case we are creating a Custom view)

...And select it

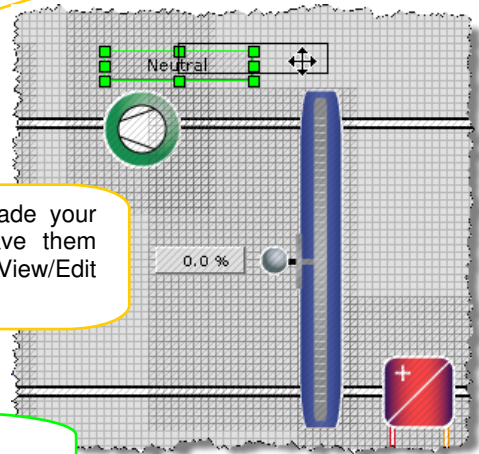
When the view displays in Workbench toggle the View/Edit mode switch



Edit the view by moving the PxPane widgets that contain the component views



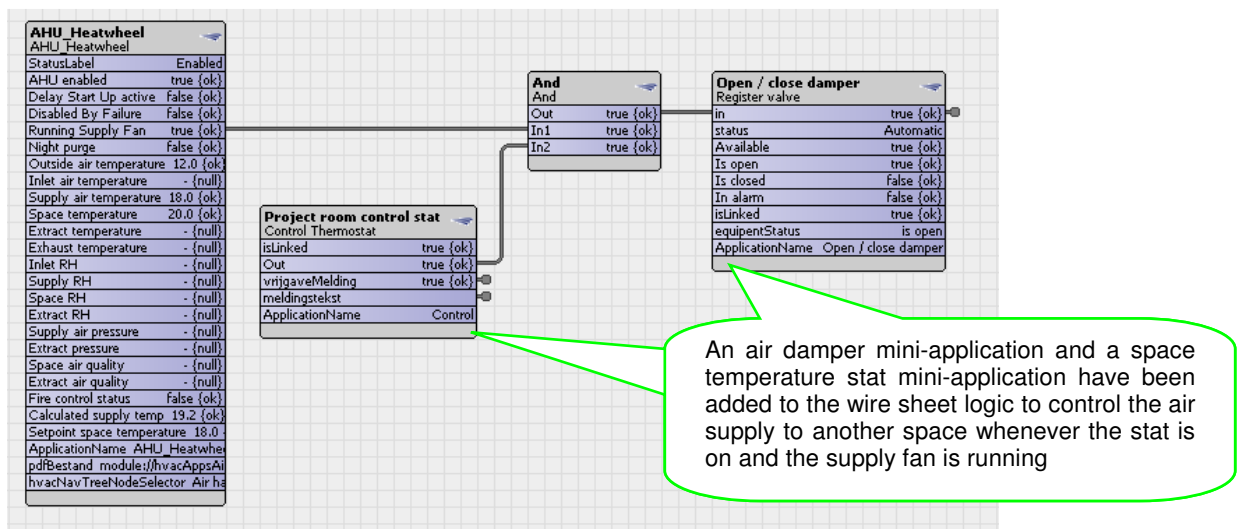
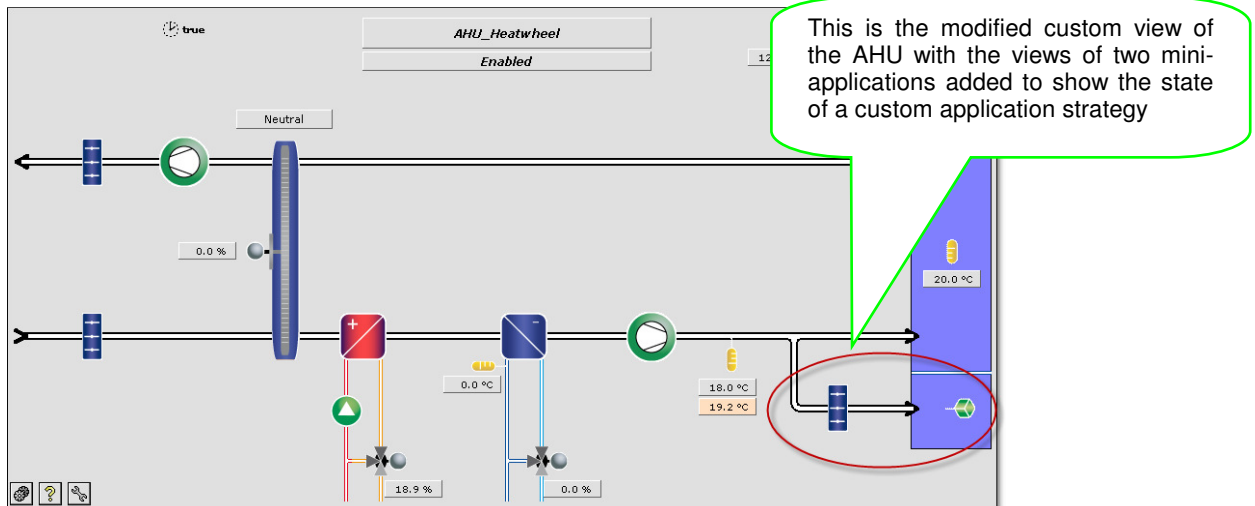
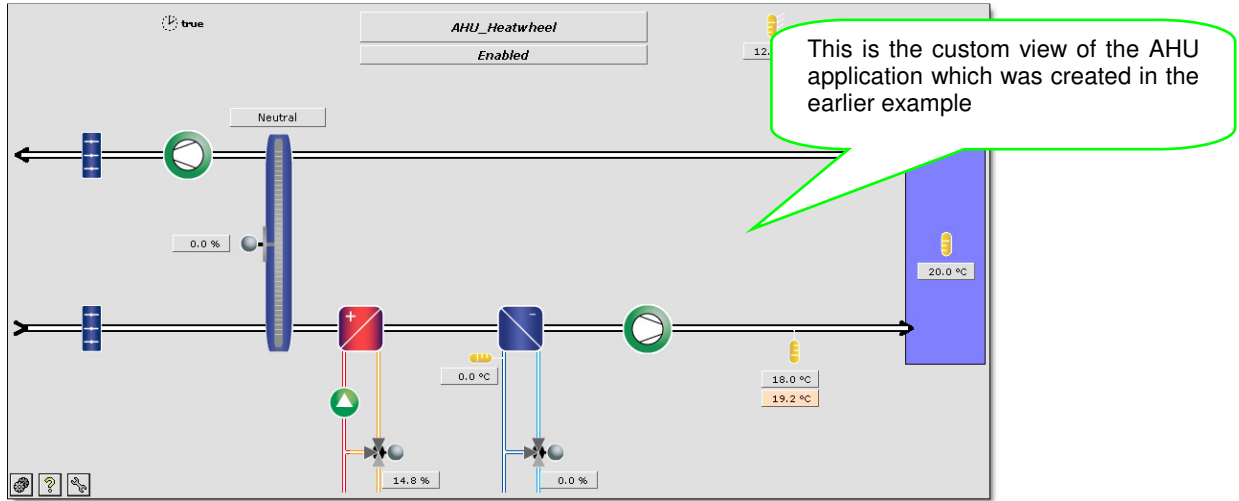
When you have made your changes simply save them by toggling the View/Edit mode switch

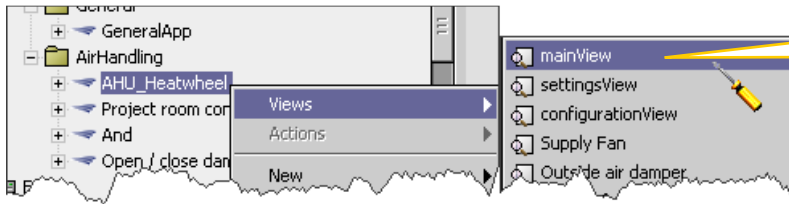


**Note:**

You are Done. The Custom view is automatically selected as the view to be always used for this application

- **This example** shows how a 'custom' view is modified to include a strategy which has been created with some custom logic to cater for a specific requirement:



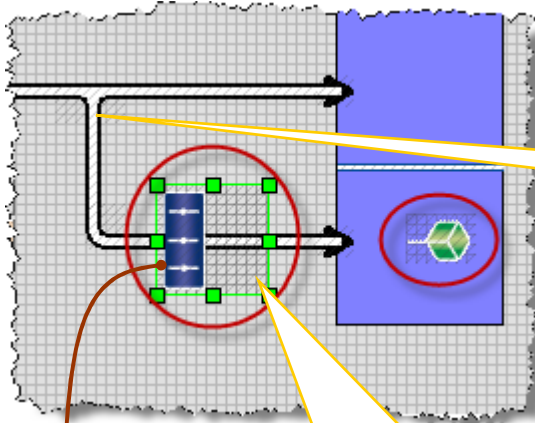
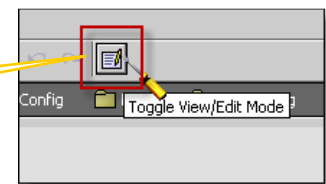


Select the main view of the AHU application

**Note:**

In this example, we are editing the existing 'custom' view and hence we can access it via the application 'Views' menu. If the current view was the 'default' view then a 'custom' view would need to be selected first via the Application View Editor menu as shown in the earlier example

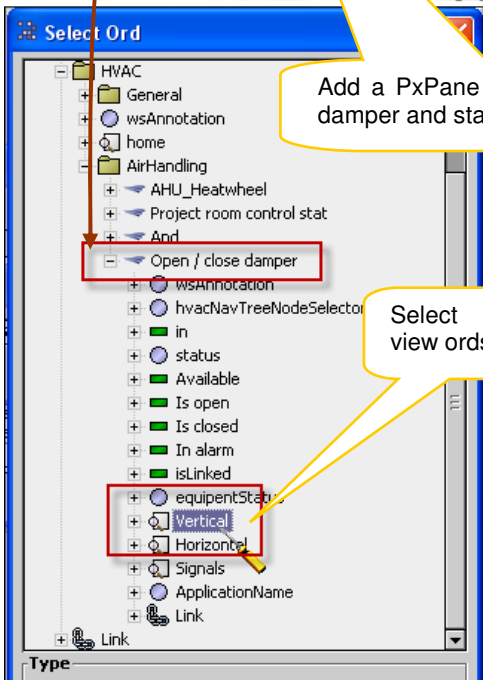
When the view displays in Workbench toggle the View/Edit mode switch



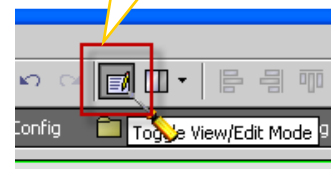
Add graphical piping and make adjustments to the existing view components

Add a PxPane widget for each of the damper and stat views

When you have made your changes simply save them by toggling the View/Edit mode switch



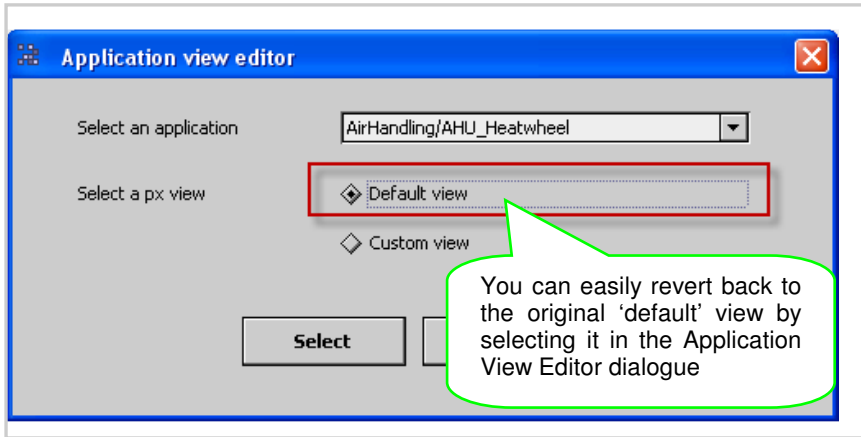
Select the view ords



**Note:**

You are Done. The Custom view is automatically updated and will be the view to be always used for this application

## Diagnostics



**Warning:**

Be careful if you have more than one station open in Workbench.

The Application View Editor will edit the application views of the station that is currently running where Workbench is loaded which in this example is the laptop.

However, if the laptop has no station running then it will edit the Jace station although you will find that it will take longer to find all the applications

