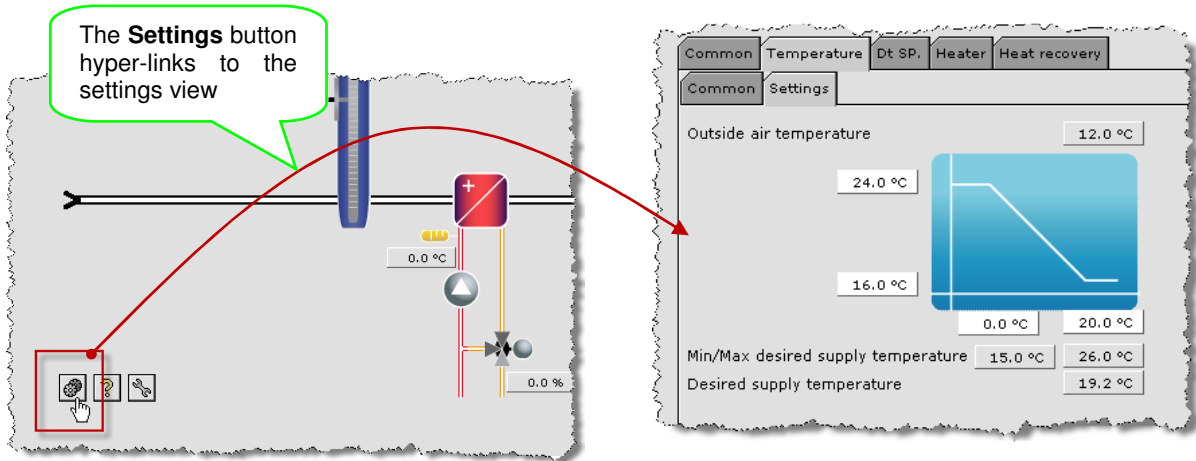
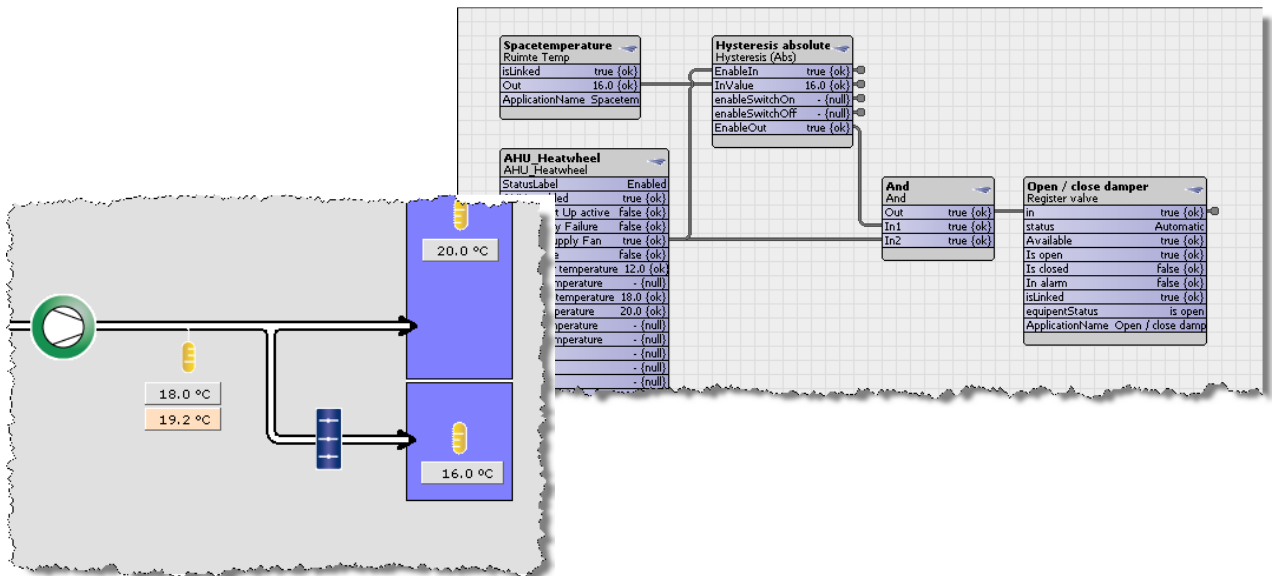


EN-43: Customising Settings

- Every super application in Vykon HVAC has a **Settings View** which contains user information about the operation of the application such as its current temperatures, as well as a number of settings such as the minimum and maximum limits and control setpoint values. Access to the settings view is at a lower password level than the access for configuration. The settings view is accessed via a hyperlink iconic button on the application main view



- If you have customised an application by adding custom wire sheet logic you may also wish to add its settings adjustments and information. This can be easily done by one of two methods which are illustrated in this engineering note
- Example 1:** In this example, some custom logic has been added to the AHU application which opens an air damper when the temperature in a conference room is low. The temperature is measured with a space sensor. A 'Hysteresis absolute' mini-application is used to create a boolean switch to control the on/off air damper which is also interlocked with the running of the main supply fan. The hysteresis mini application contains its own settings view which needs to be added to the main settings view so that the user can adjust the hysteresis setpoint. The main view of the application has also been customised using the 'Application view editor' which is described elsewhere. Here is the custom logic which has been added to the wire sheet and also the main view which has been customised:



Select the Strategy Configuration tab in the main application

Add an extra settings tab and give it a name

Note: All super applications contain an 'Extra settings tab' option in the Strategy configuration

Navigate and select the ord of the Hysteresis settings view

...and you're done

AHU_Heatwheel

Common Temperature Dt SP. Heater Heat recovery **Conference room**

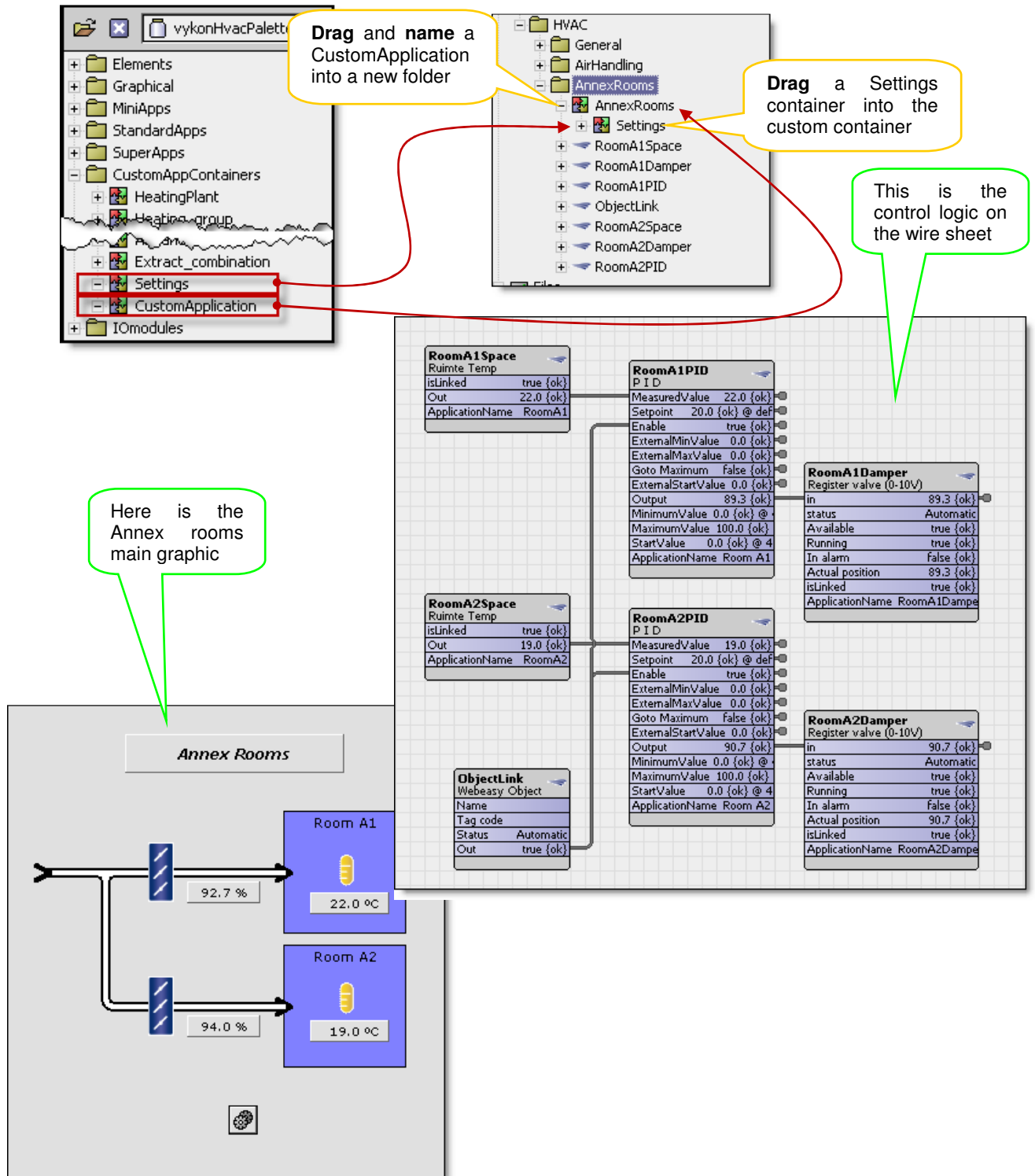
Conference room space temperature 16.0 °C

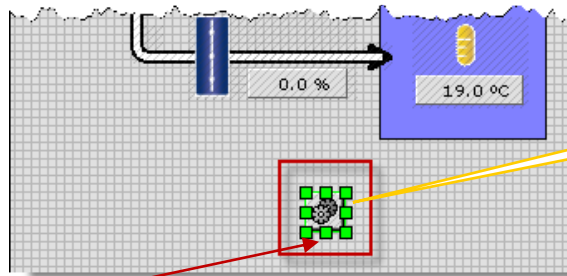
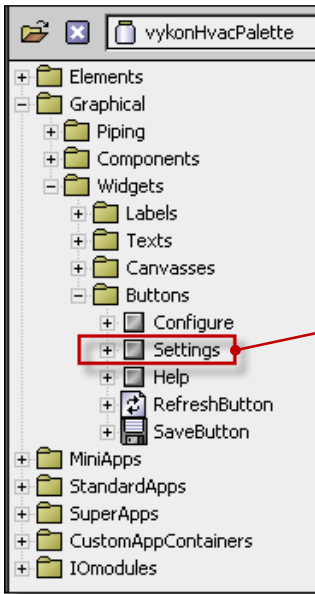
On 18.0 °C 00:10 mm:ss

Off 22.0 °C 00:10 mm:ss

Status

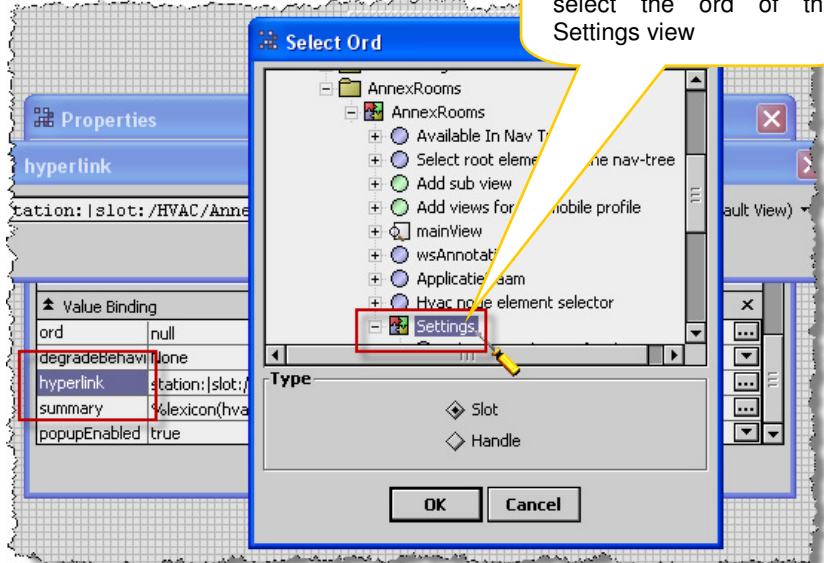
- Example 2:** In this example, some custom logic has been added to a Custom Application Container to create an air application. Two rooms in an Annex, which is supplied with conditioned air, need to be individually controlled using a modulating damper with control loop and individual space temperature sensors. An occupancy time schedule enables the application. The sensor, loop and damper are all mini applications and the control loop has its own settings view. A settings button must be added to the main view and the settings view configured to include the control loop settings views:



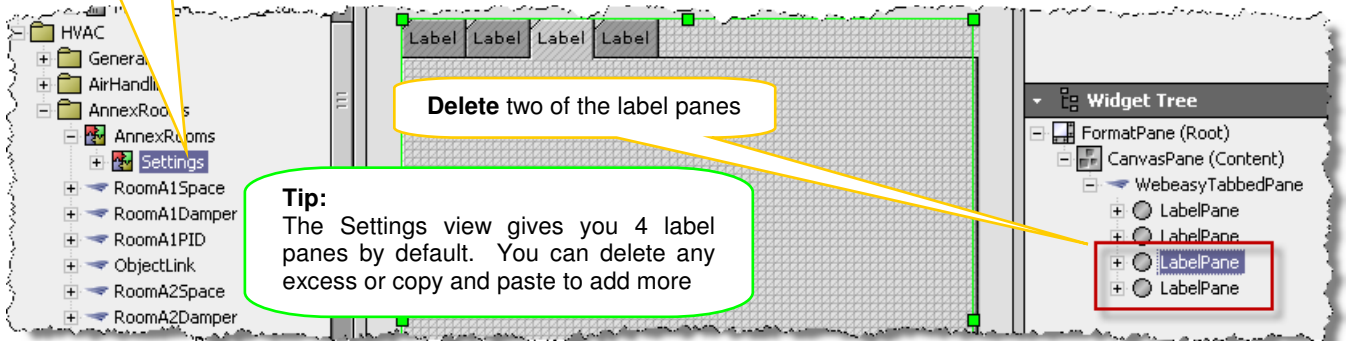


Drag a Settings Button onto the main view

Navigate the hyperlink property on the Value binding of the button to select the ord of the Settings view



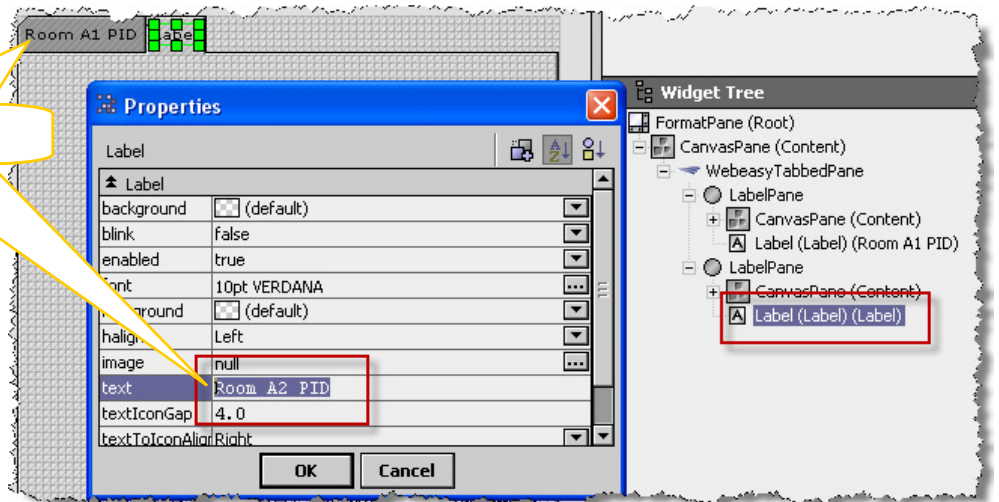
Edit the settings view

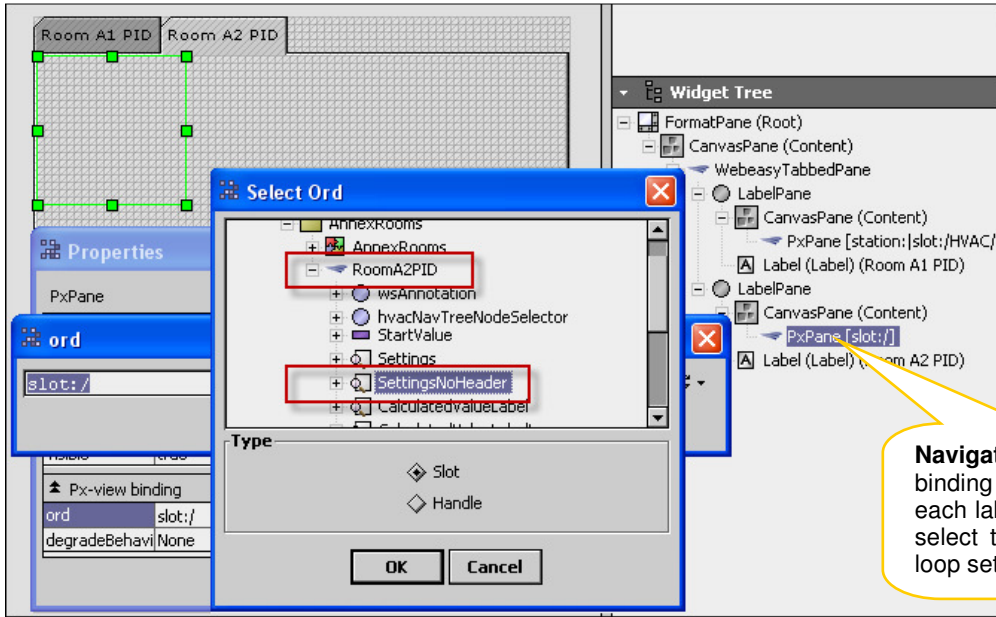


Delete two of the label panes

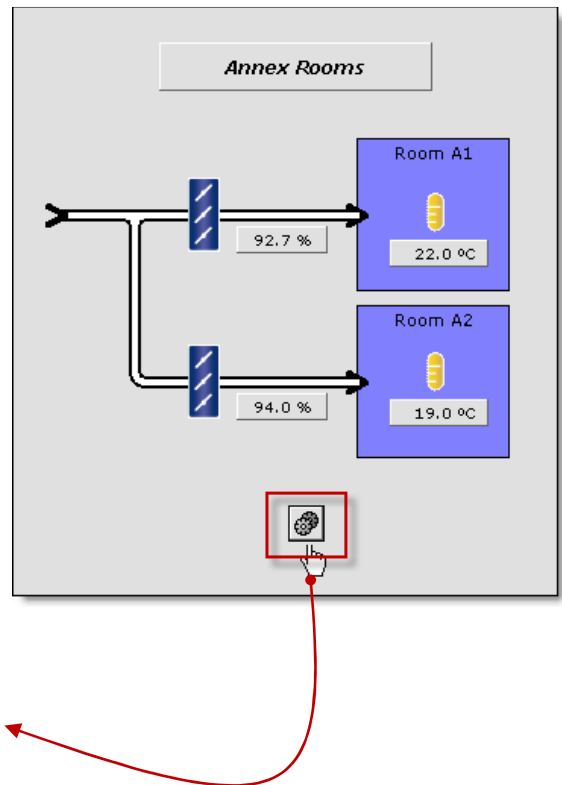
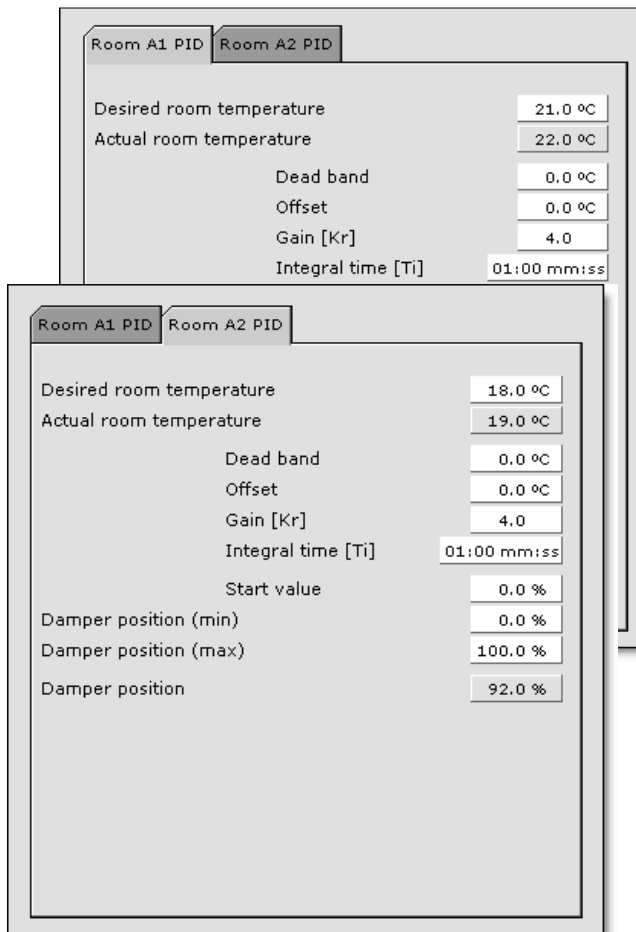
Tip:
The Settings view gives you 4 label panes by default. You can delete any excess or copy and paste to add more

Set the text on the labels





Navigate the Px-view ord binding of the PxPane on each label pane canvas to select the ord of the PID loop settings view



- Example 3:** Returning to the first example shown in this engineering note, there is no reason that you cannot link an 'Extra settings tab' to any settings view. In this final example, a second extra custom settings tab is created on the AHU application settings view and this displays the settings we created in example 2:

